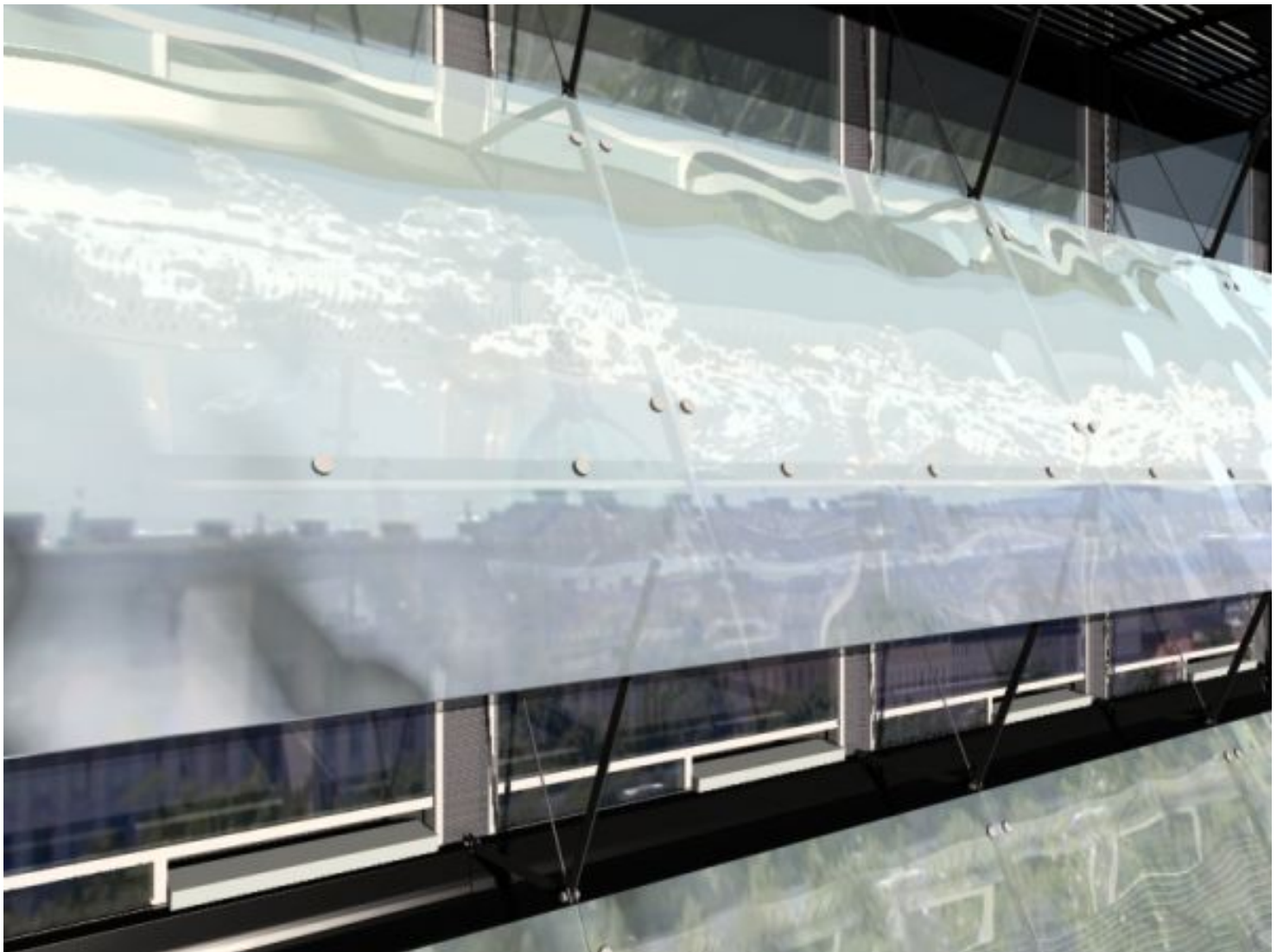
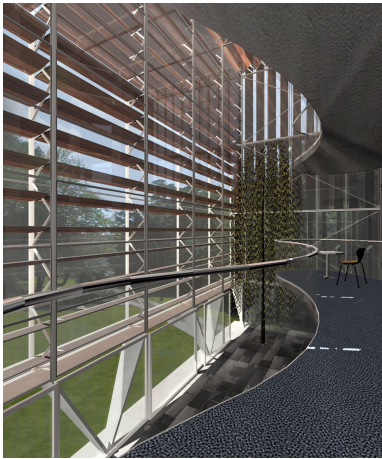
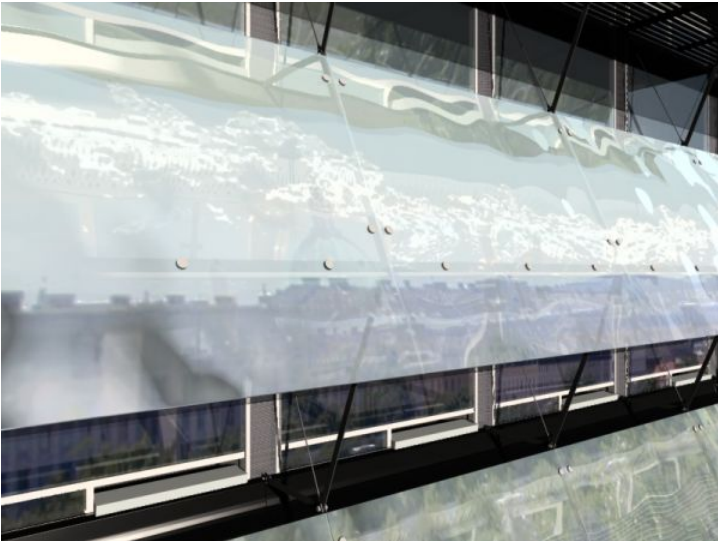
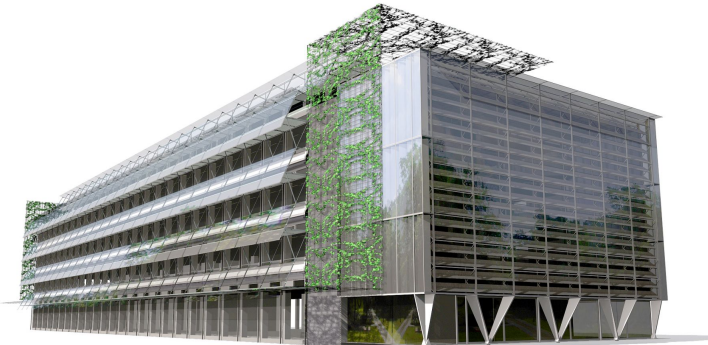


# EPO



Gallery



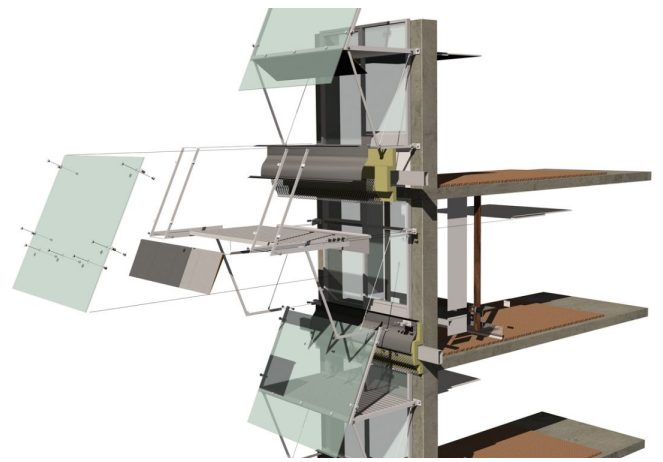
## Solution

The existing building of the European Patent Office is located in the immediate vicinity of Vienna's largest historically grown garden network (botanical garden and the baroque garden of Belvedere Palace) and protected from the traffic noise of the busy Rennweg street by the building in front of it.

driendl\*architects developed a completely optimized thermal and spatial concept for the existing building, in order to significantly reduce the previously high energy consumption and to place the building in the context of its surroundings.

The integration of openable glass surfaces enables passive use of solar energy. In addition to window ventilation, controlled draft-free ventilation is planned for optimal air hygiene.

The daylight supply of the open work rooms is achieved through sun protection with light control.



---

Design

A four-story winter garden with shading in the form of adjustable slats complements the building in the south. This acts as an internal communication zone through all levels, and furthermore it is possible to use the sunlight on clear winter days.

Above of the new entrance a pergola covers the newly defined forecourt to ensure necessary hold for a laminar greening. The two flat roofs above the ground floor on the eastern side are intensively greened.

In addition to this optimization of the microclimate and energy consumption, the entire building is in direct contact with its immediate surroundings, for example the Botanical Garden Vienna.

Info

Category  
Office/Headquarters

Copyright  
driendl\*architects ZT GmbH

City  
Vienna

Commissioner  
European Patent Office

Period  
2004–2010

Type  
competition, 1st prize

Status  
unbuilt