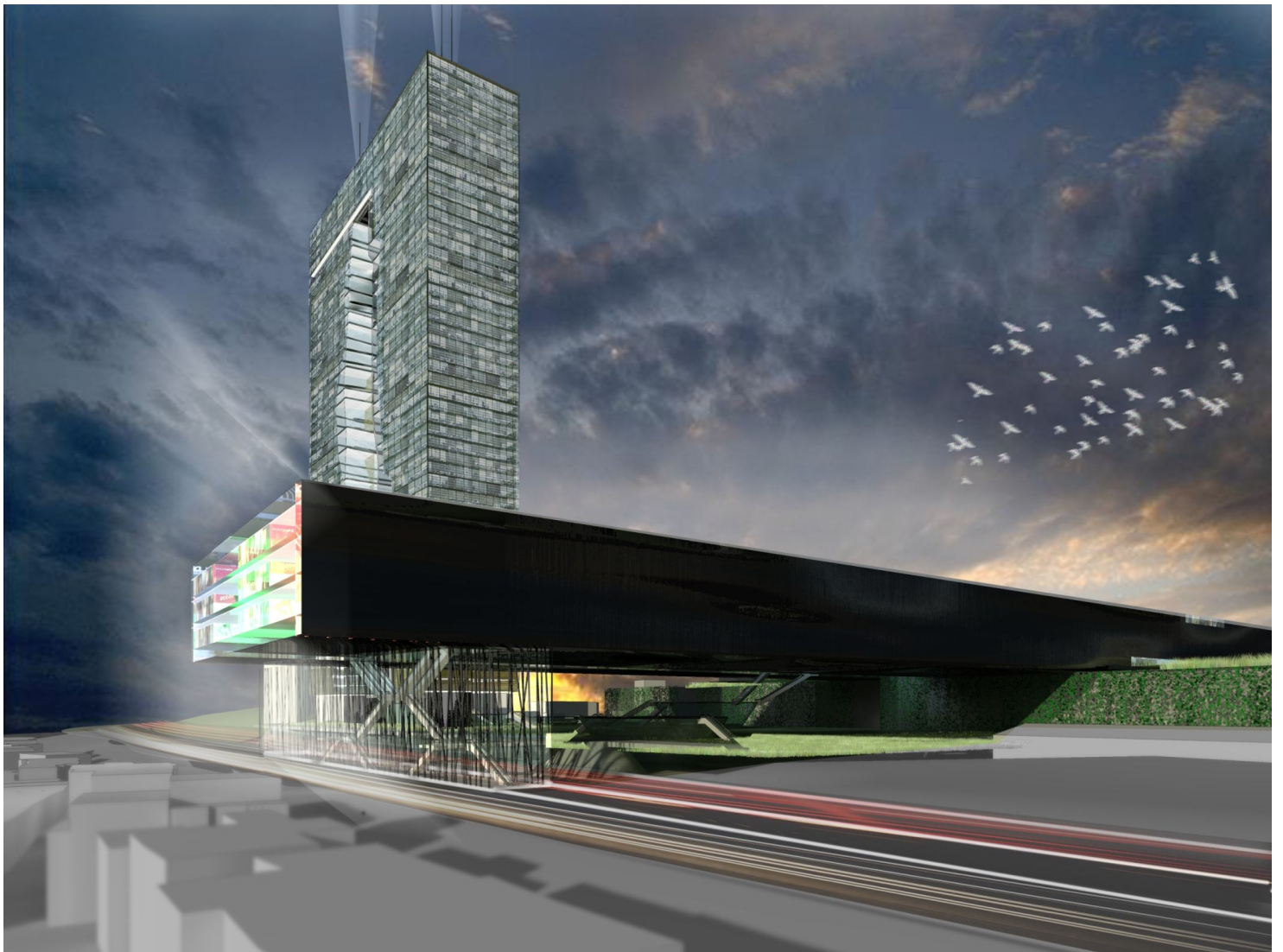
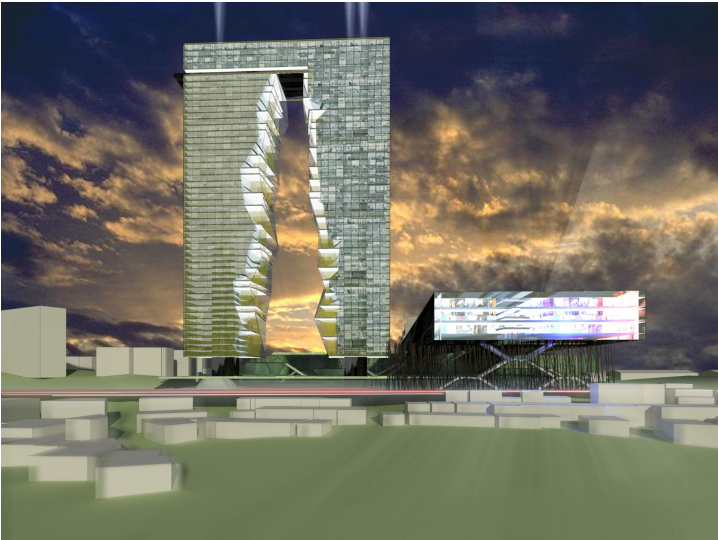
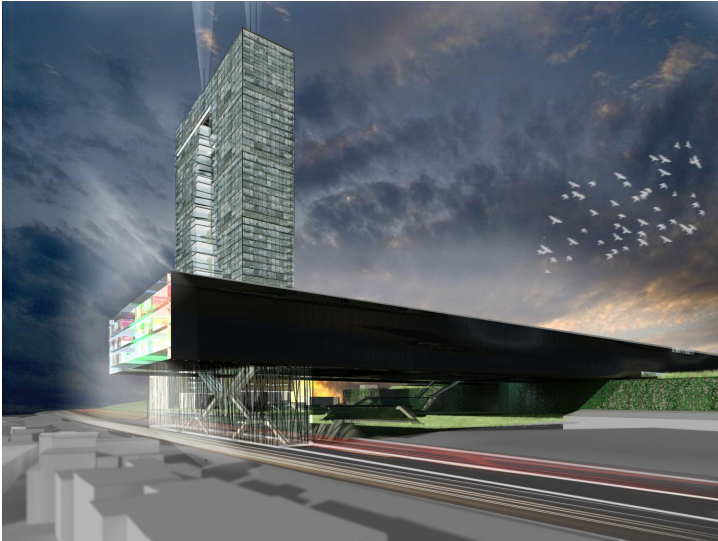


# Perpa





## TOWERBRIDGE PERPA

Situated in best location in Istanbul, right at a pulsating crossroad and near the recently established *law center*, the well known Perpa Market remains structurally unchanged but receives a green shell.

Perpa's new skin provides an urban climate lung and means an effective upgrade for the nearby hospitals and retirement home. Additionally, on the roof and on the areas around Perpa new public green areas are created.

Customers will arrive by car or metrobus; the motorway and entrance to the new shopping mall are connected and all facilities – public and private - can be reached by foot from the metrobus station. People can meet up in the theater or cinema, located in the public areas, that appear hovering over the district.

The new tower represents a landmark for the whole area, a symbolic door for the blooming future of this district with high potential.

## Info

Category  
Landmark,  
Office/Headquarters,  
Hotel/Guesthouse,  
Shoppingcenter

Copyright  
driendl\*architects ZT GmbH

City  
Istanbul, Turkey

Commissioner  
d\*a

Period  
2009–

Type  
self-initiative

Status  
unbuilt